

# Test Results and Interview Guide

Candidate: **Elizabeth Wantsajob**  
Assessment: AI Product Management  
Completed: May 22, 2026  
Prepared for: Sara Maple  
Example Company

## What's Included

- Overall Score
- Competency Summary Table
- Comparison Matrix
- Detailed Competency Results with Interview Guide

**Important Note:** The AI Product Management assessment measures one or more important competencies, and collects audio or video responses to specific questions. Attribute types measured vary by test, but can include cognitive ability, skills, knowledge, personality characteristics, emotional intelligence, and past behavioral history. Various types of analysis may be conducted on the recorded responses depending on the test configuration. Note that these results should always be used as a part of a balanced candidate selection process that includes independent evaluation steps, such as interviews and reference checks.

## Overall

Candidate	Score	Interpretation
<b>Elizabeth Wantsajob</b> beth.wantsajob@gmail.com AI Product Management May 22, 2026 Above average	<span style="font-size: 24pt; font-weight: bold; color: green;">74</span>	

**Key**

- Candidate Score
- Higher Risk
- Lower Risk

## Competency Summary

Competency	Score	Interpretation
<b>Skills/Knowledge (relates to immediate readiness)</b>		
AI Deployment, User Enablement, and Process Orchestration	83	
AI Product Lifecycle Management (for Essay)	62	
AI Strategic Assessment and Business Case Development (for Essay)	62	
AI Product Lifecycle Management	88	
AI Requirements Engineering	75	
AI Strategic Assessment and Business Case Development	74	

## Comparison

Percentile scores indicate how the candidate compares to other test-takers within various groups. The candidate scored equal to or better than the fraction of test-takers indicated by the percentile.

Test-Taker Group	Percentile	0	10	20	30	40	50	60	70	80	90	100	
Global	74th												
North America	61st												
United States	61st												
Example Company	68th												

## Artificial Intelligence (AI) Generated Scores

This table includes one or more scores derived from a large language model AI query. AI-derived scores are non-deterministic. That is, they are not precisely repeatable. Therefore, these scores should always be treated as supplementary information and should never be used exclusively or compared to hard cutoff values.

Estimated Value	Score	Confidence	Interpretation
Knowledge, Skills, and Abilities Summary	-	-	<p>Summary Points (AI):</p> <ul style="list-style-type: none"> <li>(Generic Text for Sample Report) Strong performer in Drag and Drop Files tasks, indicating comfort with file management and basic computer interactions.</li> <li>Demonstrates solid numerical accuracy in Recognizing and Confirming Numbers, a valuable asset in detail-oriented roles.</li> <li>Moderate overall performance in Analytical Thinking and Attention to Detail, with adequate grammar skills but room for improvement.</li> <li>Struggles with Reading and Analyzing Problems, which may limit effectiveness in roles requiring critical reading and complex problem-solving.</li> <li>Lowest performance in Navigating Between Screens, suggesting difficulty with multi-screen software workflows that could impact productivity in computer-intensive roles.</li> </ul> <p>Narrative (AI): Elizabeth Wantsajob demonstrates a mixed profile of knowledge, skills, and abilities across the assessed competencies.</p> <p>Elizabeth shows a strong aptitude in Drag and Drop Files, performing well on this technical task and suggesting she is comfortable with this type of computer interaction. This is a notable strength that would translate well into roles requiring file management and basic computer navigation tasks.</p> <p>In the area of Analytical Thinking and Attention to Detail, Elizabeth performs at a moderate level. She demonstrates solid ability in Recognizing and Confirming Numbers, which suggests she is careful and accurate when working with numerical data — a valuable skill in detail-oriented work environments. Her Grammar performance is adequate but leaves room for improvement, indicating she may occasionally make written communication errors. Her weakest area within this competency is Reading and Analyzing Problems, where she struggled to consistently interpret and work through written problem scenarios. This may impact her effectiveness in roles that require critical reading, written comprehension, or complex problem-solving.</p> <p>Elizabeth's most significant area for development is Navigating Between Screens, where she scored considerably lower than the other competencies. This suggests she may have difficulty efficiently moving through software interfaces or multi-screen workflows, which could slow productivity in roles that rely heavily on navigating computer applications or data entry systems.</p> <p>Overall, Elizabeth brings some useful technical strengths, particularly in file management and numerical accuracy, but would benefit from targeted development in software navigation and analytical problem-solving to be fully effective in roles that demand these skills.</p> <p>Computed on: April 2, 2026, 11:09:49PM EDT</p>

## Detail

Candidate: **Elizabeth Wantsajob**, beth.wantsajob@gmail.com  
Assessment: AI Product Management  
Authorized: May 22, 2026, by Sara Maple, Example Company, qamailsaram.mike@hravatar.com  
Started: May 22, 2026, 2:58:41PM EDT  
Completed: May 22, 2026, 2:58:41PM EDT  
Overall Score: 74

## Knowledge and Skills Detail

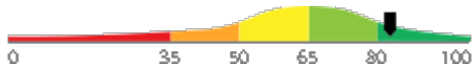
This section contains a list of job-related knowledge areas and skills that have been evaluated. Low scores in these areas often indicate that additional learning may be required before top performance can be achieved.

Detail

Interview Guide

### AI Deployment, User Enablement, and Process Orchestration

Score: 83



*Description:*

Addresses the practical activities required to successfully roll out AI-driven systems at scale, including coordinating system integration testing, designing and delivering user training programs, managing change adoption, and overseeing the orchestration of automated business processes across teams and systems.

*Interpretation:*

Candidate should achieve superior job performance in this area with little or no training.

The candidate exhibits an advanced and comprehensive mastery of AI deployment, user enablement, and process orchestration, reflecting a strong ability to lead large-scale AI system rollouts, coordinate complex integration testing, and drive change adoption across teams and systems. They are exceptionally well-prepared to own and execute end-to-end AI deployment strategies at an organizational level.

Describe a time you led or played a significant role in deploying an AI or automation tool to end users. How did you approach training and adoption, and what did you do when things did not go as planned?



1  
Candidate provides a vague or incomplete example that does not demonstrate meaningful ownership of the deployment or adoption process. Does not address how they responded to challenges or adjusted their approach based on user feedback.

3  
Candidate shares a relevant example with reasonable detail about training and rollout activities. However, the response may lack specificity about how they handled resistance to adoption, technical issues during deployment, or how they measured the success of the rollout.

5  
Candidate provides a detailed and concrete example demonstrating clear ownership of the deployment process, including how they designed training programs, managed stakeholder expectations, addressed adoption challenges, and used feedback or performance data to iterate and improve the rollout. Demonstrates strong cross-functional coordination and problem-solving under real deployment conditions.

Once an AI tool is ready to launch, what steps would you take to make sure the people who need to use it are prepared and that the rollout goes smoothly?



1  
Candidate focuses narrowly on technical deployment steps or provides only a superficial answer such as 'send out a training email.' Does not address change management, user adoption strategies, or how they would coordinate across teams to ensure a successful rollout.

3  
Candidate identifies relevant rollout activities such as user training and communication plans, but does not demonstrate a structured or phased approach to deployment. May overlook important elements such as pilot testing, feedback loops, support mechanisms, or integration validation.

5  
Candidate describes a comprehensive and structured rollout plan that includes phased deployment, user training design, stakeholder communication, integration and UAT coordination, feedback collection, and post-launch support. Demonstrates

Detail Interview Guide

awareness of change management principles and how to drive adoption of AI tools among diverse user groups.

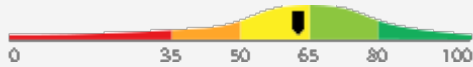
**Results by Topic for AI Deployment, User Enablement, and Process Orchestration**

AI System Rollout and Integration Coordination: 2 of 4 Correct

User Enablement, Change Management, and Process Orchestration: 3 of 4 Correct

**AI Product Lifecycle Management (for Essay)**

Score: 62



*Description:*

The ability to be concise, friendly, and accurate when drafting written communications.

*Interpretation:*

The candidate exhibits average writing skills, which can hinder high performance in some jobs.

Average writing style. Usually gets point across but may use extra words or inconsistent sentence structure. See writing sample section of report for raw essay(s) submitted.

Overall AI Score:	65.0
Approximate Word Count:	197
Average words per minute while composing:	21.7
AI Confidence Level:	80
Argument Strength (AI):	60.0
Clarity and Coherence (AI):	70.0
Grammar and Mechanics (AI):	60.0
Other Errors per 100 Words:	2.0
Spelling errors per 100 words:	1.0

Please see below to view the essay submitted.

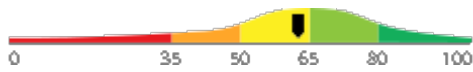
Are you comfortable when you need to express yourself through writing? Do you feel confident you can get the right message across? Tell me about a project or task where your writing skills were required for success. How did it go?

★ 1	★ 2	★ 3	★ 4	★ 5
Not confident in own writing ability. Prefers speaking.		Somewhat confident in own writing ability. Writes frequently.		Very confident in ability to write. Has received compliments on clarity of written correspondences.

**Detail Interview Guide**

**AI Strategic Assessment and Business Case Development (for Essay)**

Score: 62



*Description:*

The ability to be concise, friendly, and accurate when drafting written communications.

*Interpretation:*

The candidate exhibits average writing skills, which can hinder high performance in some jobs.

Average writing style. Usually gets point across but may use extra words or inconsistent sentence structure. See writing sample section of report for raw essay(s) submitted.

Overall AI Score:	65.0
Approximate Word Count:	197
Average words per minute while composing:	21.7
AI Confidence Level:	80
Argument Strength (AI):	60.0
Clarity and Coherence (AI):	70.0
Grammar and Mechanics (AI):	60.0
Other Errors per 100 Words:	2.0
Spelling errors per 100 words:	1.0

Please see below to view the essay submitted.

Are you comfortable when you need to express yourself through writing? Do you feel confident you can get the right message across? Tell me about a project or task where your writing skills were required for success. How did it go?

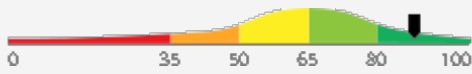
★ 1	★ 2	★ 3	★ 4	★ 5
Not confident in own writing ability. Prefers speaking.		Somewhat confident in own writing ability. Writes frequently.		Very confident in ability to write. Has received compliments on clarity of written correspondences.

Detail

Interview Guide

**AI Product Lifecycle Management**

Score: 88



*Description:*

Covers the end-to-end process of planning, building, testing, and deploying AI-enabled applications for both internal staff and external customers. Includes managing iteration cycles, versioning, model monitoring, and coordinating cross-functional teams through each phase of the product lifecycle.

*Interpretation:*

Candidate should achieve superior job performance in this area with little or no training.

The candidate demonstrates an advanced and comprehensive mastery of AI product management, reflecting strong competency across lifecycle management, strategic assessment, requirement engineering, and process orchestration. This individual is well-equipped to independently lead the end-to-end development and deployment of both internal and customer-facing AI-enabled applications, and may serve as a subject matter expert or mentor within an organization.

Describe a time you managed or contributed to an AI product through multiple lifecycle stages. What were the most significant challenges you encountered between phases, and how did you address them?



1

Candidate provides a generic or superficial example that lacks detail about AI-specific lifecycle challenges. Does not clearly articulate their personal role or the decisions they made between phases.



2

Candidate shares a relevant example with reasonable detail, identifying at least one meaningful challenge such as stakeholder alignment or testing delays. However, the response may lack specificity about how AI-related factors (e.g., model performance, data readiness) influenced lifecycle decisions.



3



4

Candidate provides a detailed, concrete example that demonstrates ownership across multiple lifecycle phases. Clearly describes AI-specific challenges such as model validation failures, shifting requirements, or deployment infrastructure issues, and articulates the specific actions they took to resolve them and keep the product on track.



5

Can you walk me through the basic stages you would follow to take an AI-enabled product from an initial idea to a live deployment?



1

Candidate provides a vague or incomplete description of the lifecycle, omitting key phases such as testing, validation, or deployment. May conflate AI product development with general software development without acknowledging AI-specific considerations like model training or data pipelines.



2

Candidate identifies the major phases (discovery, development, testing, deployment) and acknowledges some AI-specific considerations, but struggles to articulate how the phases connect or how cross-functional teams are coordinated throughout.



3



4

Candidate clearly outlines a structured lifecycle including discovery, requirements, development, model validation, testing, deployment, and monitoring. Demonstrates awareness of AI-specific challenges such as data quality, model drift, and iterative retraining, and explains how they would coordinate stakeholders across phases.



5

## Detail

## Interview Guide

**Results by Topic for AI Product Lifecycle Management**

AI Product Development Phases and Iteration Management: 1 of 2 Correct

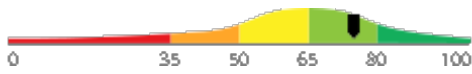
AI Model Monitoring and Performance Management: 1 of 2 Correct

Detail

Interview Guide

**AI Requirements Engineering**

Score: 75



*Description:*

Focuses on the ability to translate business needs into actionable technical specifications for AI systems, including drafting use cases, defining logic flows, writing functional and non-functional requirements, and communicating acceptance criteria to engineering and data science teams.

*Interpretation:*

Candidate should achieve above average job performance in this area with little or no training.

The candidate exhibits a solid and proficient understanding of AI requirements engineering, demonstrating the ability to translate business needs into well-structured technical specifications for AI systems. They are generally capable of drafting use cases, defining logic flows, and communicating functional, non-functional, and acceptance criteria effectively to engineering and data science teams, with some room for refinement.

Walk me through how you have documented requirements or use cases for an AI feature or system in the past. What did you include, and how did you ensure the engineering team had what they needed to build it correctly?



1

Candidate describes a documentation process that is either too high-level or borrowed from non-AI software contexts, without addressing how AI-specific requirements (e.g., data dependencies, model behavior expectations) were captured or communicated.



2

Candidate provides a relevant example with reasonable documentation artifacts such as user stories or flow diagrams, and describes how they communicated with the engineering team. However, the response may lack detail about how AI-specific logic, edge cases, or acceptance criteria were handled.



3



4

Candidate describes a thorough and structured documentation process with concrete examples of artifacts produced, such as logic flow diagrams, data requirement specs, and acceptance criteria tied to model performance. Clearly explains how they validated requirements with both business stakeholders and technical teams to ensure alignment before development began.



5

If a business stakeholder told you they wanted to 'use AI to improve customer service,' what steps would you take to turn that request into something an engineering team could actually build?



1

Candidate offers only surface-level steps such as 'talk to the team' or 'write down the requirements' without demonstrating a structured approach. Does not mention techniques like user story mapping, logic flow documentation, or defining measurable acceptance criteria.



2

Candidate describes a reasonable process for gathering requirements, such as stakeholder interviews and defining user stories, but may not address AI-specific considerations like data inputs, model outputs, confidence thresholds, or fallback logic that engineering teams need to build effectively.



3



4

Candidate outlines a structured requirements engineering process including stakeholder discovery, use case definition, logic flow mapping, and the creation of functional and non-functional requirements tailored to AI systems. Demonstrates understanding of AI-specific specification needs such as input/output definitions, edge case handling, and



5

Detail

Interview Guide

measurable  
performance  
criteria.

**Results by Topic for AI Requirements Engineering**

Functional & Non-Functional AI  
Requirements Writing: 3 of 4 Correct

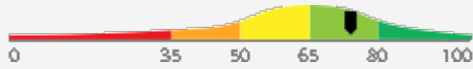
AI Use Case Definition & Logic Flow  
Documentation: 2 of 3 Correct

Detail

Interview Guide

**AI Strategic Assessment and Business Case Development**

Score: 74



*Description:*

Encompasses the ability to evaluate the feasibility and value of AI initiatives by estimating financial and operational benefits, identifying risks, assessing organizational readiness, and surfacing technical and process bottlenecks that could impede successful implementation.

*Interpretation:*

Candidate should achieve above average job performance in this area with little or no training.

The candidate exhibits a solid understanding of AI initiative feasibility and business case development, including the ability to estimate benefits, identify risks, and assess organizational readiness with reasonable accuracy. Minor gaps may exist in more advanced or nuanced aspects of the domain, but this individual is generally well-equipped to contribute effectively to AI strategic planning efforts.

Tell me about a time you assessed the potential value or feasibility of an AI initiative. What factors did you consider, and how did your assessment influence the decision to move forward or not?



1

Candidate provides a vague or generic example that does not demonstrate a structured evaluation process. The connection between their assessment and the final decision is unclear, or the example does not involve meaningful AI-specific considerations.



2

Candidate shares a relevant example and identifies key factors they evaluated, such as cost savings or technical feasibility. However, the response may lack depth in areas such as risk identification, stakeholder alignment, or how they quantified the expected business impact.



3



4

Candidate provides a detailed example demonstrating a rigorous assessment process, including how they estimated financial or operational value, identified and prioritized risks, evaluated organizational readiness, and presented findings to decision-makers. Clearly articulates how their assessment directly shaped the outcome or direction of the initiative.



5

How would you go about determining whether an AI solution is worth pursuing for a specific business problem?



1

Candidate provides a vague answer focused primarily on enthusiasm for AI or general cost-benefit thinking, without describing a structured approach to evaluating feasibility, ROI, or organizational readiness. Does not mention risks or constraints.



2

Candidate identifies relevant factors such as cost, potential efficiency gains, and stakeholder buy-in, but does not present a structured framework for assessment. May overlook AI-specific risks such as data availability, model reliability, or change management challenges.



3



4

Candidate describes a clear and structured assessment approach that includes quantifying potential operational or financial gains, evaluating data and technical feasibility, identifying organizational risks and bottlenecks, and assessing stakeholder readiness. Demonstrates the ability to build a compelling and realistic business case for or against an AI initiative.



5

Detail	Interview Guide
<b>Results by Topic for AI Strategic Assessment and Business Case Development</b>	
AI Business Case Development and ROI Estimation:	0 of 2 Correct
AI Feasibility and Organizational Readiness Assessment:	2 of 3 Correct

## Writing Sample(s)

During the assessment, the candidate was asked to write one or more passages. The text they wrote is included in the table below for review.

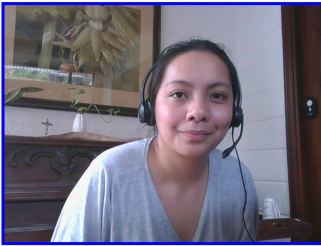
Writing Sample - Question	Response
<p>Please write an essay of 100 - 800 words evaluating the advantages and disadvantages of living in a tropical climate.</p>	<p>Living in a warm or tropical environment has a number of advantages and disadvantages. Whether it's right for you depends on your preferences, and in some cases, your health.</p> <p>The advantages include the following:</p> <ul style="list-style-type: none"> <li>a. You can walk outside in light clothing almost every day and you never have to wear a heavy coat.</li> <li>b. Most plants and trees grow faster in warm climates so if you like to maintain a garden you will experience greater success.</li> <li>c. Nice weather every day means you are not stuck inside for long periods of time, which can sometimes cause depression.</li> </ul> <p>At the same time, significant disadvantages include the following:</p> <ul style="list-style-type: none"> <li>a. It rains on most days and you need to be prepared for heavy rain at all times.</li> <li>b. The hot sun can cause severe sunburn if you are outside and not protected.</li> <li>c. Your air conditioning utility bill can be very high and if can drain financial resourcez.</li> <li>d. Hot humid weather can make strenuous exercise more difficult if you are not in good health.</li> </ul> <p>When deciding if living in a tropical climate is right for you, consider which of these advantages or disadvantages is most meaningful for you.</p> <p>[Misspelled Words: coatt (1), resourcez (1)]</p> <p><b>Comments (AI):</b> The essay provides a balanced view of the advantages and disadvantages of living in a tropical climate. The ideas are logically presented and easy to follow, though there are minor spelling and grammar errors. The arguments are somewhat persuasive, but could be strengthened with more detailed examples and explanations. Overall, the essay meets the average scoring criteria.</p>

## Identity Confirmation Photos

The following photos of the candidate and any identification were uploaded during the assessment session.

### Photo Analysis Results

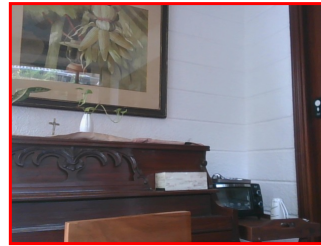
- Risk:	Medium risk of cheating based on image inconsistencies
- Percent match among processed faces	100%
- Total images processed	17
- Total images with valid faces	14 (82%)
- Total pairs of faces compared	13
- Pairs in which faces matched	13 (100%)



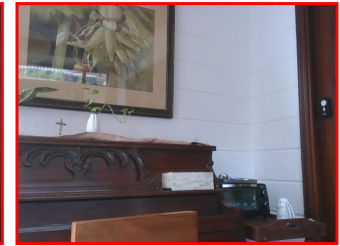
Pre/Post-Test Photo



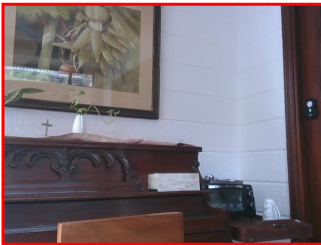
ID Photo



In-Test Error Detected (No Face Detected)



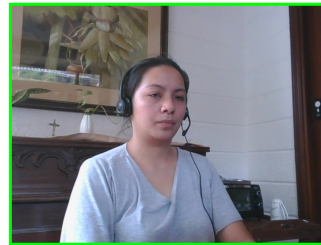
In-Test Error Detected (No Face Detected)



In-Test Error Detected (No Face Detected)



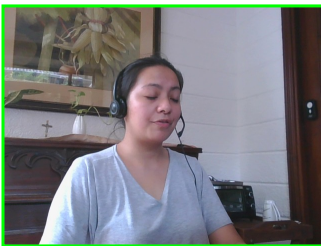
In-Test Photo



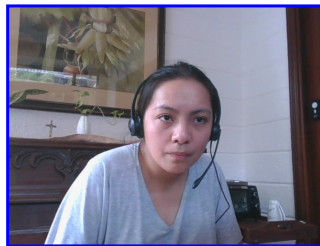
In-Test Photo



In-Test Photo



In-Test Photo



Pre/Post-Test Photo

## Individual Responses Information

The following table provides question by question response information.

Question	Candidate Response Information
AI Product Lifecycle Management (for Essay) (Response(s) Selected/Entered by Candidate)	Question / Response(s) Selected/Entered by Candidate

**Question** **Candidate Response Information**

CT3\_ESAY\_SAMPLE\_REPORT\_I\_1  
Please write an essay of 100 - 800 words evaluating the advantages and disadvantages of living in a tropical climate.

Living in a warm or tropical environment has a number of advantages and disadvantages. Whether it's right for you depends on your preferences, and in some cases, your health.

The advantages include the following:

- a. You can walk outside in light clothing almost every day and you never have to wear a heavy coat.
- b. Most plants and trees grow faster in warm climates so if you like to maintain a garden you will experience greater success.
- c. Nice weather every day means you are not stuck inside for long periods of time, which can sometimes cause depression.

At the same time, significant disadvantages include the following:

- a. It rains on most days and you need to be prepared for heavy rain at all times.
- b. The hot sun can cause severe sunburn if you are outside and not protected.
- c. Your air conditioning utility bill can be very high and if can drain financial resourcez.
- d. Hot humid weather can make strenuous exercise more difficult if you are not in good health.

When deciding if living in a tropical climate is right for you, consider which of these advantages or disadvantages is most meaningful for you. (65.0)

**AI Strategic Assessment and Business Case Development (for Essay) (Response(s) Selected/Entered by Candidate)** **Question / Response(s) Selected/Entered by Candidate**

CT3\_ESAY\_SAMPLE\_REPORT\_I\_1  
Please write an essay of 100 - 800 words evaluating the advantages and disadvantages of living in a tropical climate.

Living in a warm or tropical environment has a number of advantages and disadvantages. Whether it's right for you depends on your preferences, and in some cases, your health.

The advantages include the following:

- a. You can walk outside in light clothing almost every day and you never have to wear a heavy coat.
- b. Most plants and trees grow faster in warm climates so if you like to maintain a garden you will experience greater success.
- c. Nice weather every day means you are not stuck inside for long periods of time, which can sometimes cause depression.

At the same time, significant disadvantages include the following:

- a. It rains on most days and you need to be prepared for heavy rain at all times.
- b. The hot sun can cause severe sunburn if you are outside and not protected.
- c. Your air conditioning utility bill can be very high and if can drain financial resourcez.
- d. Hot humid weather can make strenuous exercise more difficult if you are not in good health.

When deciding if living in a tropical climate is right for you, consider which of these advantages or disadvantages is most meaningful for you. (65.0)

## Resume or CV

Summary

Updated on

Motivated career professional with extensive experience in office administration and management. Proven track record of improving efficiency, reducing costs, and enhancing office operations through strategic initiatives and technology implementation.

### Objective

I am seeking a role where I can use my many skills and my exceptional judgment and empathy for customers to make a difference to a growing company.

### Education

- Associate of Applied Science in Office Administration, Portland Community College, 2020

### Experience

- General Office Clerk, Paramount Office Management, 09/2023 – Present
- Administrative Assistant, Global Enterprises Inc., 04/2021 – 08/2023
- Administrative Assistant, Innovative Business Solutions Ltd., 07/2019 – 03/2021

### Other Qualifications

- Microsoft Office Specialist (MOS) Certification
- Certified Administrative Professional (CAP)
- International Association of Administrative Professionals (IAAP) Certification

## Report Preparation Notes

- Hiring decisions should never be based on a single source of information. The most effective use of this assessment report is as a part of a multi-faceted program of candidate evaluation that includes resume review, interviews, and reference checks.
- Overall vs Percentiles Scores: The overall score reflects the success in the test, based on the mean (average) and standard deviation of the test scores. The percentile score reflects the percentage of test-takers who scored equal or below this overall score. We recommend you use the Overall Score as your primary evaluation criteria. However, percentile scores can often be useful in comparing specific candidates against one another and with a group, such as for test takers in a certain organization or within a certain account.
- Note that comparison information is calculated based on completed instances of this assessment at that time the assessment is scored. As additional instances are completed, the comparative data may change. You can always update a report to the current values by clicking on 'Recalculate Percentiles' within the online results viewing pages at [www.hravatar.com](http://www.hravatar.com).
- Most competency scores are norm-based, which means that they can be interpreted in terms of their distance from the average or mean score. For all scales, a score equal to the mean receives a score of 65 and scores above and below this value are set so that a score change of 15 equals one standard deviation.
- For linear competencies, higher is better across the entire scale. For these scales a score between 65 and 80 (light green) represents 0 to 1 standard deviation above the mean and a score above 80 (dark green) represents more than one standard deviation above the mean. Similarly, a score of 50 - 65 (yellow) represents 0 to 1 standard deviation below the mean, while a score of 35 - 50 (orange) equates to 1 to 2 standard deviations below the mean, and a score below 35 represents more than 2 standard deviations below the mean.
- Sim ID: 20407-1, Key: 0-0, Rpt: 104, Prd: 9494, Created: 2026-05-22 14:58 EDT
- UA: Mozilla/5.0 (Windows NT 6.3; Trident/7.0; Touch; rv:11.0) like Gecko

## Score Calculation Detail

The following table provides a summary of how the overall score was calculated from each of the individual competency scores. First, all competency scores are calculated on a scale of 0-100. Note that some competencies use their color category rather than their actual numeric score in the overall calculation. For these, a standard score associated with the assigned color category is used in the overall score calculation rather than the actual numeric score. This is reflected in the "Score Value Used" column. Next, a weighted average of scores is computed using individual competency weights, typically set using job analysis data provided by the US Government Occupational Information Network (O\*Net).

Competency	Score	How applied to overall	Score Value Used	Weight (%)
AI Deployment, User Enablement, and Process Orchestration	83.1791	Numeric Score	83.1791	16.6667
AI Product Lifecycle Management	88.3196	Numeric Score	88.3196	16.6667
AI Product Lifecycle Management (for Essay)	62.9784	Numeric Score	62.9784	16.6667
AI Requirements Engineering	75.2799	Numeric Score	75.2799	16.6667
AI Strategic Assessment and Business Case Development	74.5429	Numeric Score	74.5429	16.6667
AI Strategic Assessment and Business Case Development (for Essay)	62.9784	Numeric Score	62.9784	16.6667
Weighted Average:				74.5464
Final Overall Score:				74

## Notes

(This area is intentionally blank - it's reserved as space for your notes.)